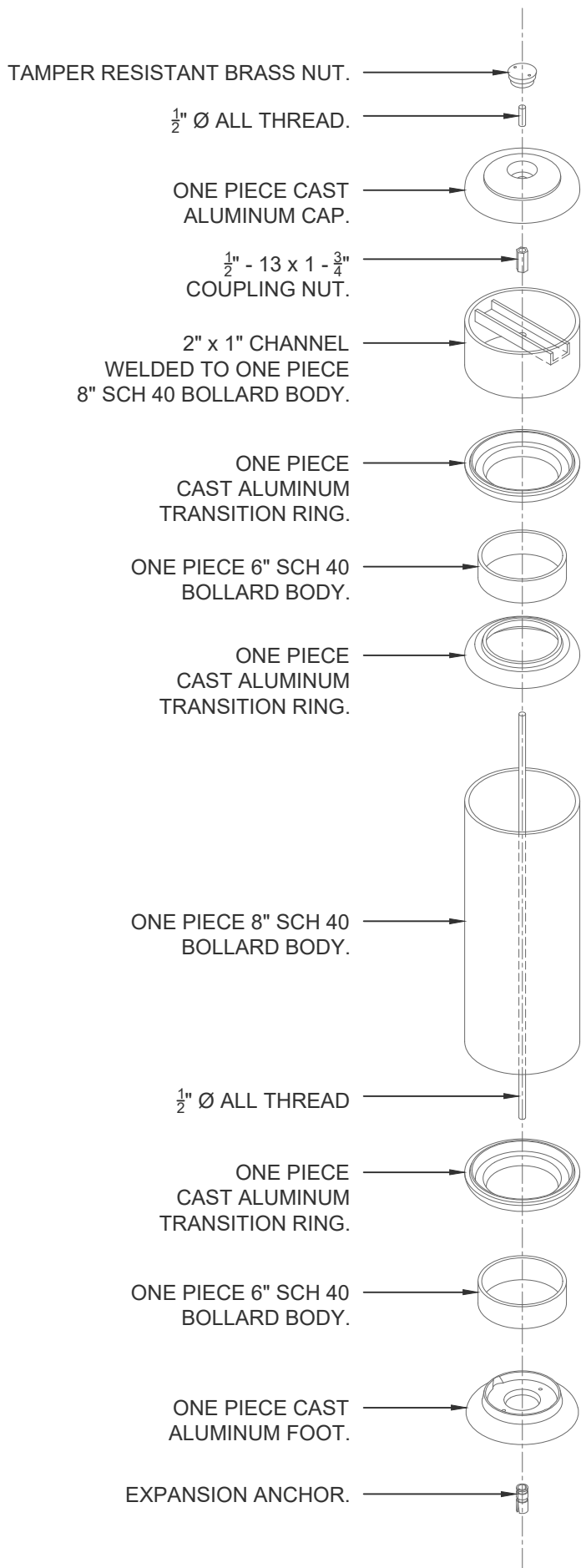
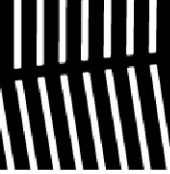
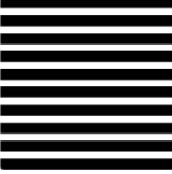




Section  
Scale: 1" = 1' 0"



Isometric  
Scale: 1" = 1' 0"

URBAN ACCESSORIES



465 E 15th Street, Tacoma, WA 98421  
1.877.487.0488 | 1.253.572.1112

This print is the property of Urban Accessories, Inc. and is loaned to the recipient subject to be returned on demand. All contents herein are confidential and must not be copied or submitted to outside parties for examination without the express written consent of Urban Accessories, Inc.

If you received these documents in mistake please contact [sales@urbanaccessories.com](mailto:sales@urbanaccessories.com).

|                  |  |
|------------------|--|
| Project Name     | Blank  |
| Specified By     | Blank  |
| Sales Contact    | <a href="mailto:sales@urbanaccessories.com">sales@urbanaccessories.com</a> |
| Project Location | Tacoma, WA   |
| Page #           | 1 of 1   |

Additional Notes

CLASSIC BOLLARD

5C1 Surface Mount

STANDARD SPECIFICATIONS

- Fabricated material will be high quality mild carbon steel, ASTM A36 (unless specified otherwise; see below).

- Finish will be powder coat (unless specified otherwise; see below).

- All visible welds to be ground smooth on outside edges.

- Fabrication will be true and square, or diameter, and sized within  $\frac{1}{8}"$ .

- For cases of "or equal" consideration, our finished, full size product should be compared to the alternative product for general quality, surface finish, precise pattern or fabrication work, metal characteristics, and overall design aesthetics.

- Dimensions are nominal.

OPTIONS

**Materials (Body):**

☐ Mild Carbon Steel, ASTM A36

☐ Other: \_\_\_\_\_

**Finishes:**

☐ Polyester Powder Coat (standard)

☐ Raw

☐ Liquid coat (Specify color)

☐ Galvanized

ADDITIONAL NOTES

- Cast in two pieces.

- Grate is  $1\frac{1}{2}"$  thick at edge.

- Center opening expansions at 1'-8" square.

- No openings greater than  $\frac{1}{4}"$ , in conformance with ADA Accessibility Guidelines.

DRAWING INFO

|            |           |
|------------|-----------|
| Drawn By   | NR        |
| Date Drawn | 3.19.2020 |