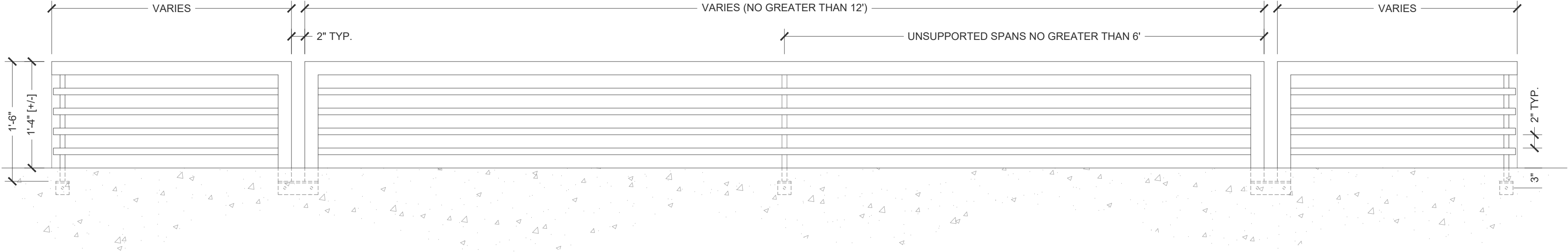
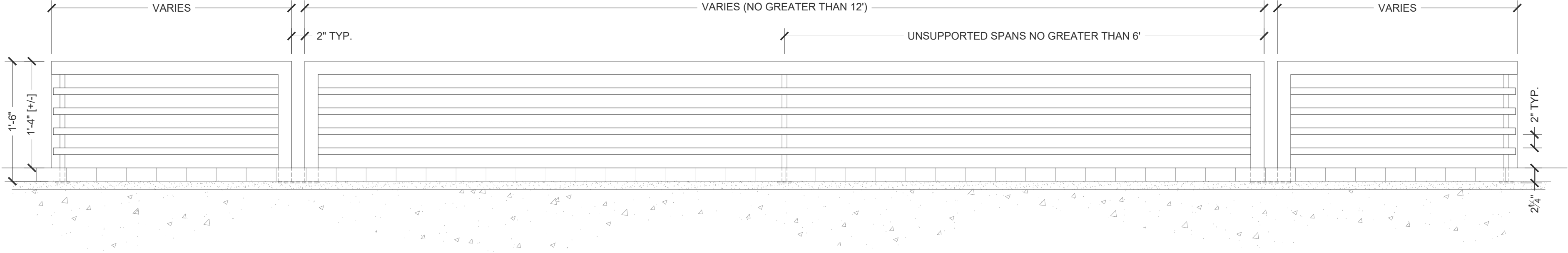




Typical Elevation - Side Mount (Sidewalk)
Scale: 1" = 1' 0"


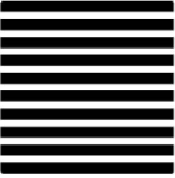




Typical Elevation - Side Mount (Sidewalk)
Scale: 1" = 1' 0"



Typical Elevation - Top Mount (Paver)
Scale: 1" = 1' 0"

URBAN ACCESSORIES



465 E 15th Street, Tacoma, WA 98421
1.877.487.0488 | 1.253.572.1112

This print is the property of Urban Accessories, Inc. and is loaned to the recipient subject to be returned on demand. All contents herein are confidential and must not be copied or submitted to outside parties for examination without the express written consent of Urban Accessories, Inc.

If you received these documents in mistake please contact
sales@urbanaccessories.com.

Project Name	Blank
Specified By	Blank
Sales Contact	sales@urbanaccessories.com
Project Location	Tacoma, WA
Page #	1 of 1

Additional Notes

NR-2 PLANTER FENCING

5 Bar

STANDARD SPECIFICATIONS

- Fabricated material will be high quality mild carbon steel, ASTM A36 (unless specified otherwise; see below).

- Finish will be powder coat (unless specified otherwise; see below).

- All visible welds to be ground smooth on outside edges.

- Fabrication will be true and square, or diameter, and sized within $\frac{1}{8}$ ".

- For cases of "or equal" consideration, our finished, full size product should be compared to the alternative product for general quality, surface finish, precise pattern or fabrication work, metal characteristics, and overall design aesthetics.

- Dimensions are nominal.

OPTIONS

Materials (Frame):

☐ Mild Carbon Steel, ASTM A36

☐ Other: _____

Finishes:

☐ Polyester Powder Coat (standard)

☐ Raw

☐ Liquid coat (Specify color)

☐ Galvanized

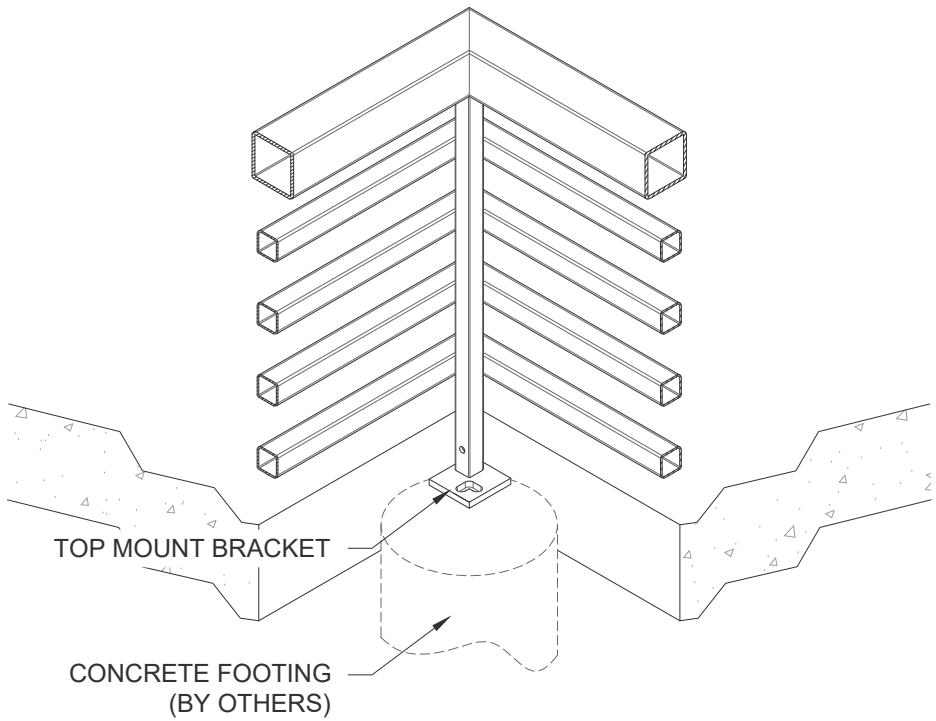
☐ Other: _____ (With approval from UA)

ADDITIONAL NOTES

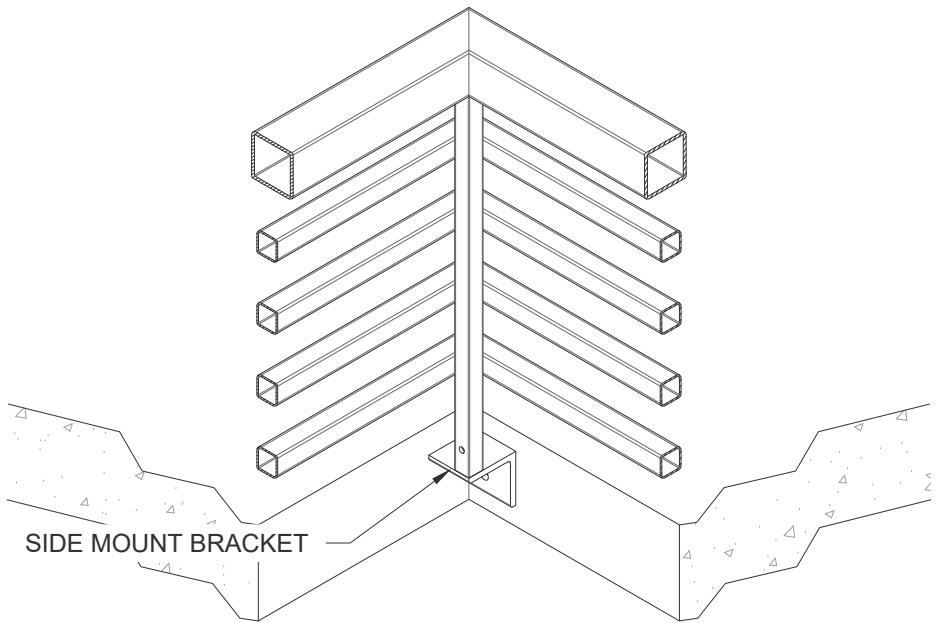
©2018 Urban Accessories. All Rights Reserved

DRAWING INFO

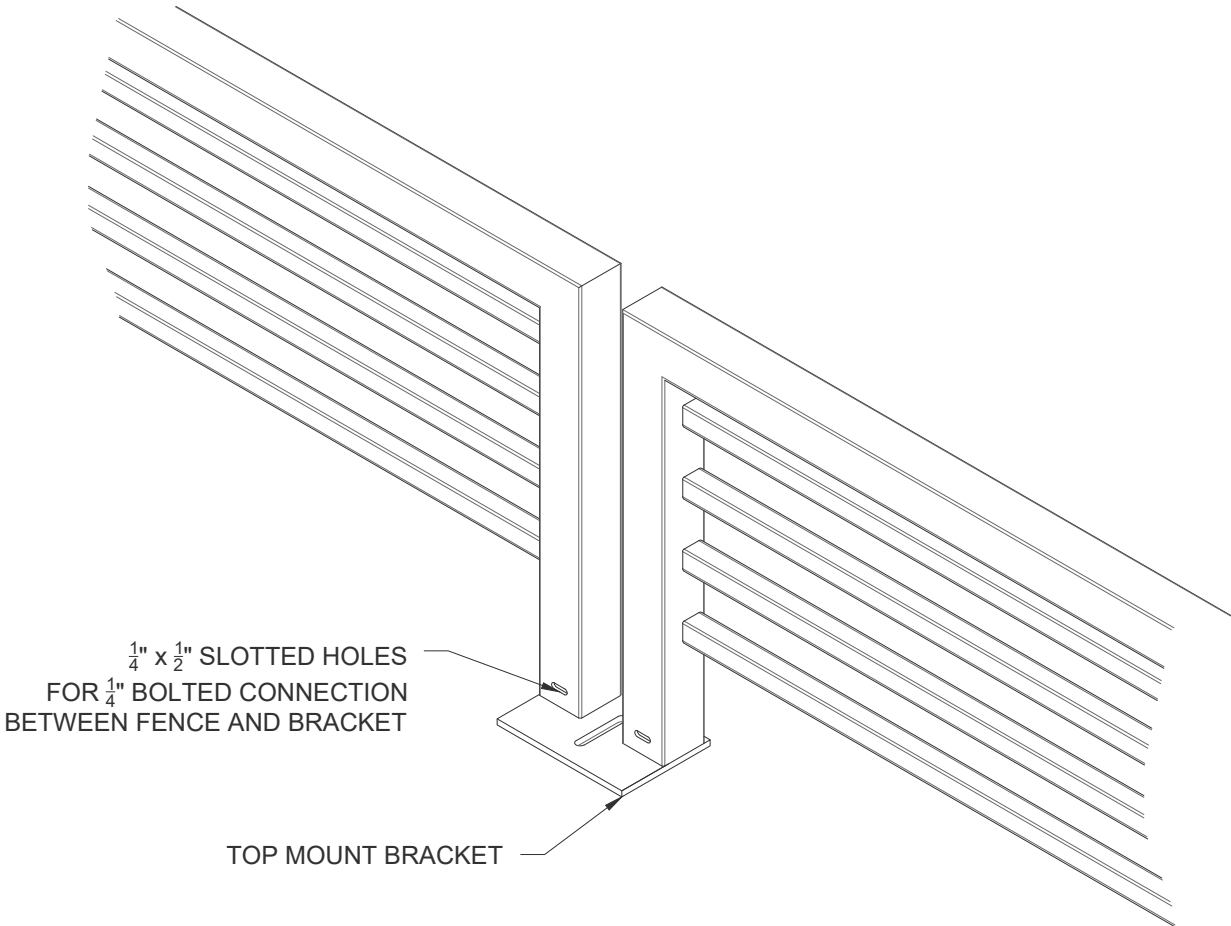
Drawn By	NR
Date Drawn	3.19.2020



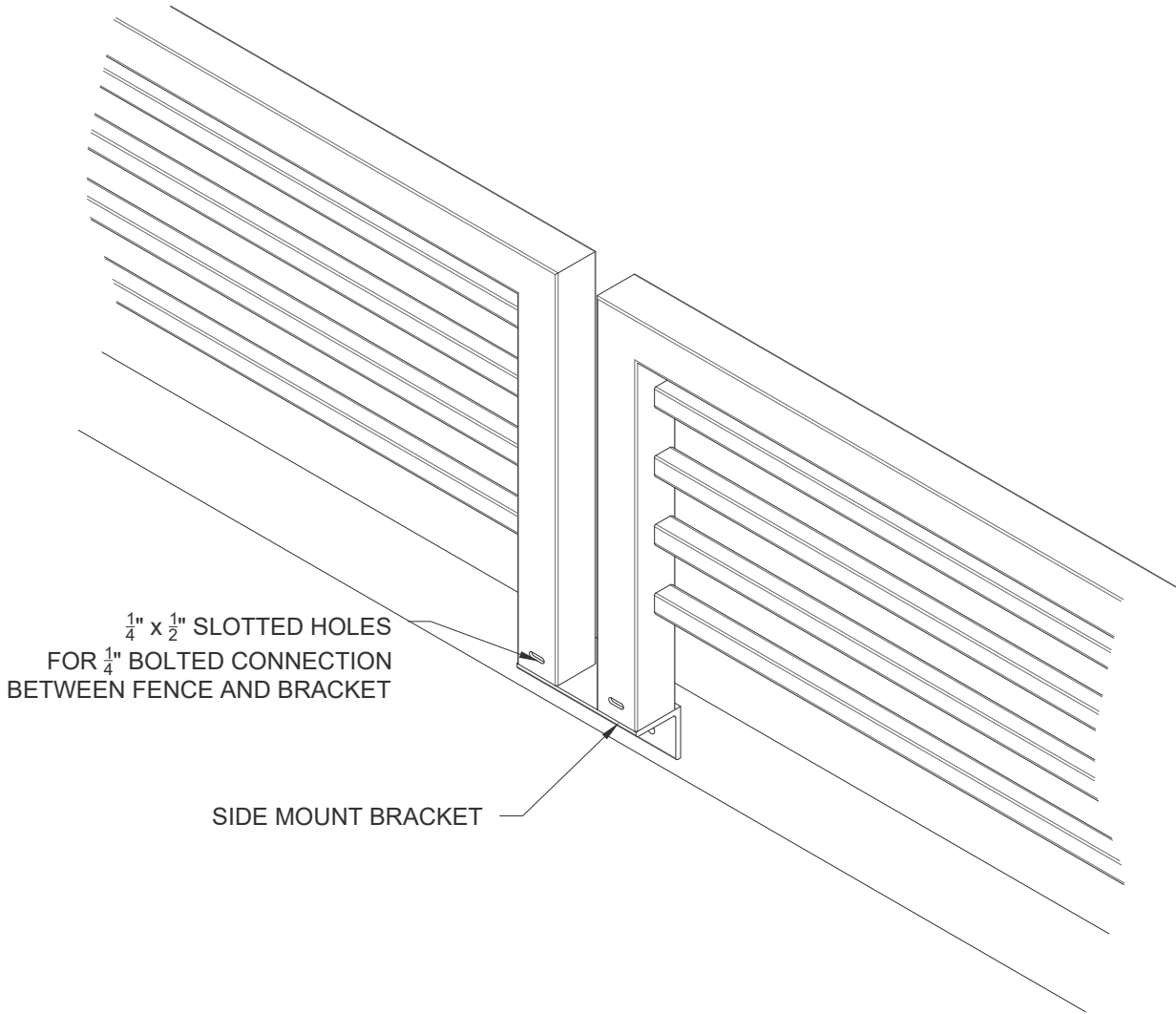
Corner Connection Detail - Top Mount
Scale: 1 1/2" = 1' 0"





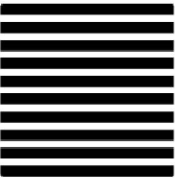
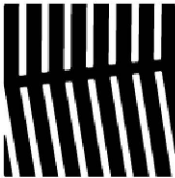
Corner Connection Detail - Side Mount
Scale: 1 1/2" = 1' 0"



Primary Connection Detail - Top Mount
Scale: 1 1/2" = 1' 0"



Primary Connection Detail - Side Mount
Scale: 1 1/2" = 1' 0"

URBAN ACCESSORIES	
	
	
465 E 15th Street, Tacoma, WA 98421 1.877.487.0488 1.253.572.1112	
This print is the property of Urban Accessories, Inc. and is loaned to the recipient subject to be returned on demand. All contents herein are confidential and must not be copied or submitted to outside parties for examination without the express written consent of Urban Accessories, Inc.	
If you received these documents in mistake please contact sales@urbanaccessories.com .	
Project Name	Blank
Specified By	Blank
Sales Contact	sales@urbanaccessories.com
Project Location	Tacoma, WA
Page #	1 of 1
Additional Notes	
NR-2 PLANTER FENCING	
5 Bar	
STANDARD SPECIFICATIONS	
- Fabricated material will be high quality mild carbon steel, ASTM A36 (unless specified otherwise; see below).	
- Finish will be powder coat (unless specified otherwise; see below).	
- All visible welds to be ground smooth on outside edges.	
- Fabrication will be true and square, or diameter, and sized within $\frac{1}{8}$ ".	
- For cases of "or equal" consideration, our finished, full size product should be compared to the alternative product for general quality, surface finish, precise pattern or fabrication work, metal characteristics, and overall design aesthetics.	
- Dimensions are nominal.	
OPTIONS	
Materials (Frame): <input type="checkbox"/> Mild Carbon Steel, ASTM A36 <input type="checkbox"/> Other: _____	
Finishes: <input type="checkbox"/> Polyester Powder Coat (standard) <input type="checkbox"/> Raw <input type="checkbox"/> Liquid coat (Specify color) <input type="checkbox"/> Galvanized <input type="checkbox"/> Other: _____ (With approval from UA)	
ADDITIONAL NOTES	
©.2018.Urban Accessories. All Rights Reserved	
DRAWING INFO	
Drawn By	NR
Date Drawn	3.19.2020

URBAN ACCESSORIES



465 E 15th Street, Tacoma, WA 98421
1.877.487.0488 | 1.253.572.1112

This print is the property of Urban Accessories, Inc. and is loaned to the recipient subject to be returned on demand. All contents herein are confidential and must not be copied or submitted to outside parties for examination without the express written consent of Urban Accessories, Inc.

If you received these documents in mistake please contact sales@urbanaccessories.com.

Project Name	Blank
--------------	-------

Specified By	Blank
--------------	-------

Sales Contact	sales@urbanaccessories.com
---------------	--

Project Location	Tacoma, WA
------------------	------------

Page #	1 of 1
--------	--------

Additional Notes

PLANTER FENCING

Mounting Bracket Details

STANDARD SPECIFICATIONS

- Fabricated material will be high quality mild carbon steel, ASTM A36 (unless specified otherwise; see below).
- Finish will be powder coat (unless specified otherwise; see below).
- All visible welds to be ground smooth on outside edges.
- Fabrication will be true and square, or diameter, and sized within $\frac{1}{8}$ ".
- For cases of "or equal" consideration, our finished, full size product should be compared to the alternative product for general quality, surface finish, precise pattern or fabrication work, metal characteristics, and overall design aesthetics.
- Dimensions are nominal.

OPTIONS

- Materials (Frame):**
- ☐ Mild Carbon Steel, ASTM A36
 - ☐ Other: _____
- Finishes:**
- ☐ Polyester Powder Coat (standard)
 - ☐ Raw
 - ☐ Liquid coat (Specify color)
 - ☐ Galvanized
 - ☐ Other: _____ (With approval from UA)

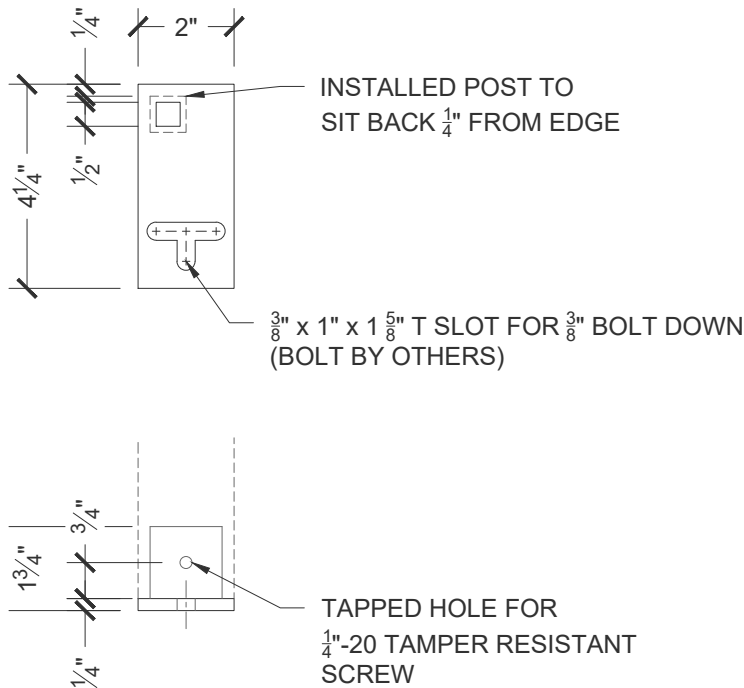
ADDITIONAL NOTES

©.2018.Urban Accessories. All Rights Reserved

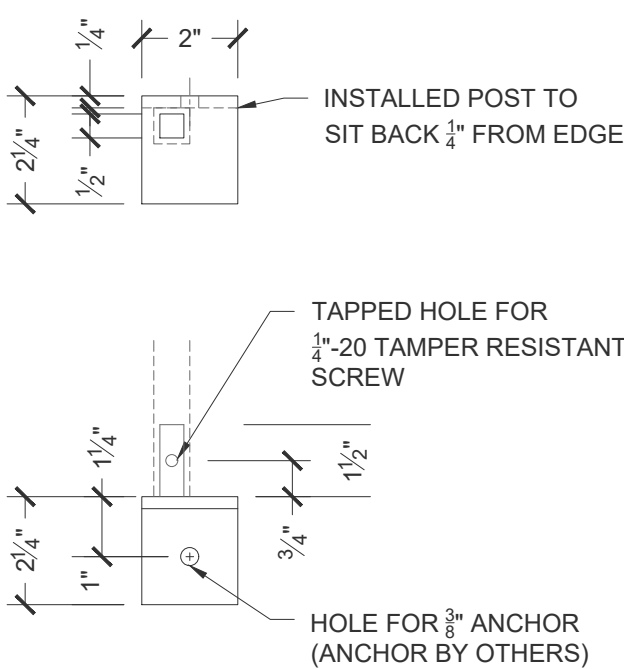
DRAWING INFO

Drawn By	NR
----------	----

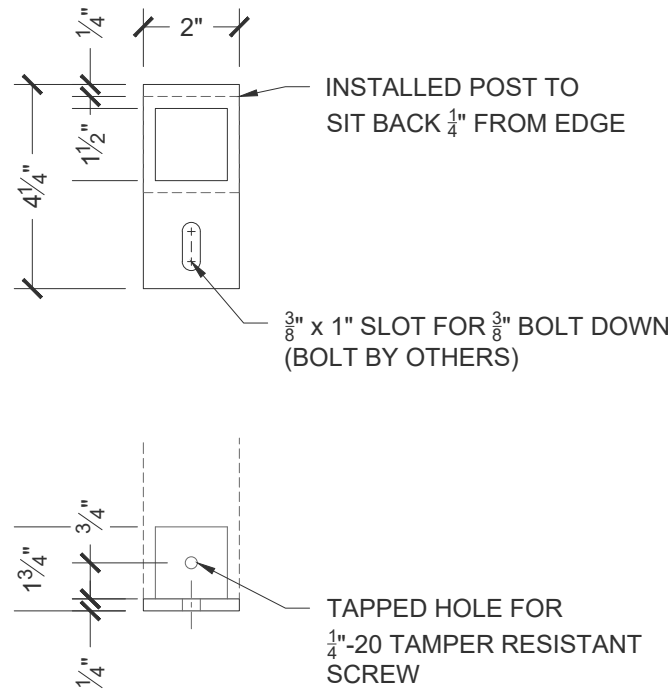
Date Drawn	3.19.2020
------------	-----------



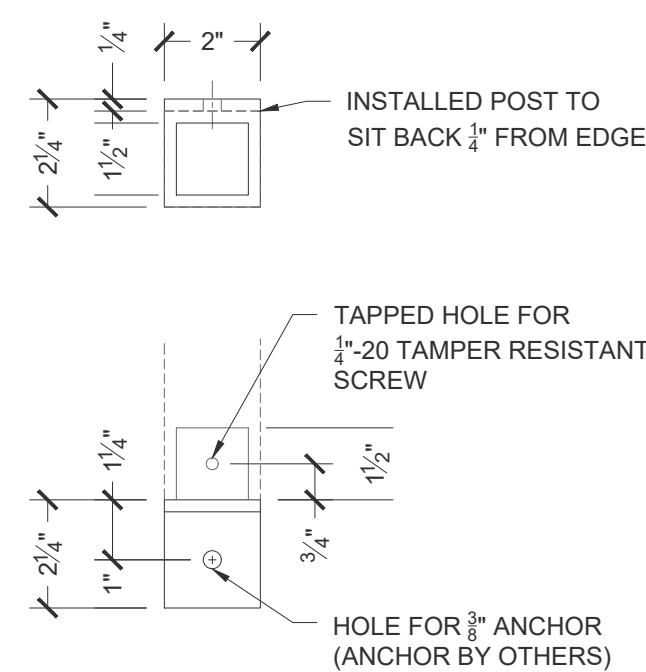
Corner Connection Detail - Top Mount
Scale: 1 1/2" = 1' 0"



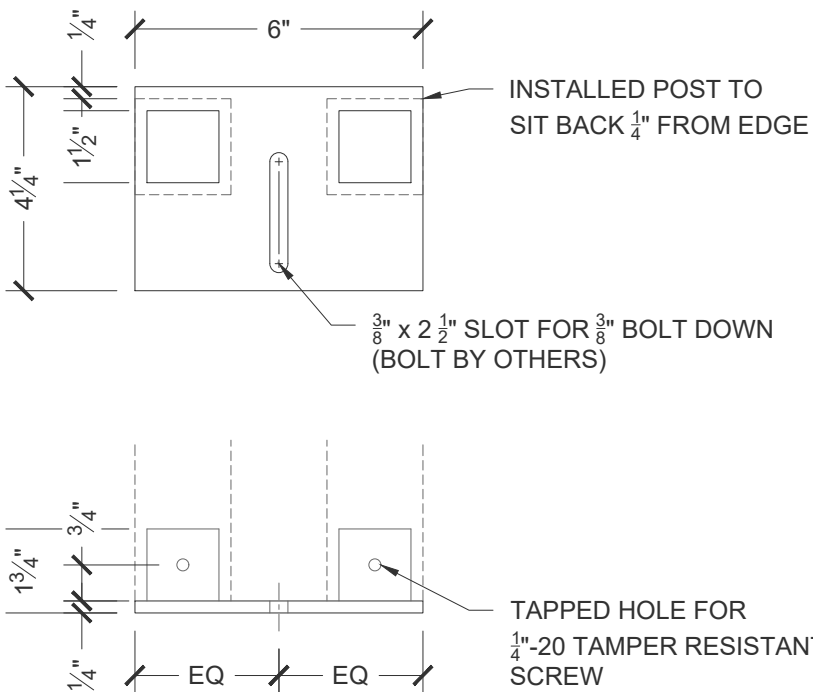
Corner Connection Detail - Side Mount
Scale: 1 1/2" = 1' 0"



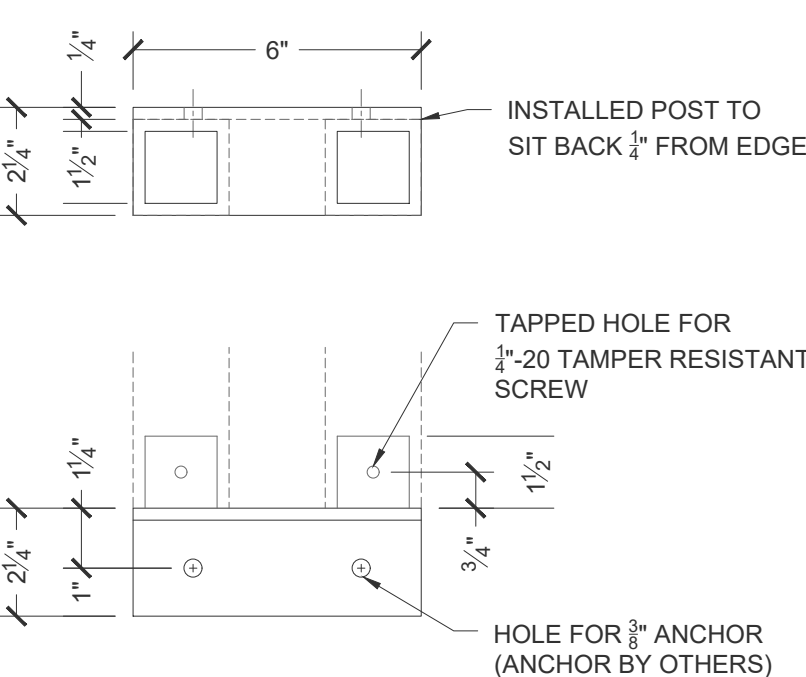
Primary Connection Detail - Top Mount - Single
Scale: 3" = 1' 0"



Primary Connection Detail - Side Mount - Single
Scale: 3" = 1' 0"



Primary Connection Detail - Top Mount
Scale: 3" = 1' 0"



Primary Connection Detail - Side Mount
Scale: 3" = 1' 0"