

465 E 15th Street, Tacoma, WA 98421
1.877.487.0488 | 1.253.572.1112

This print is the property of Urban Accessories, Inc. and is loaned to the recipient subject to be returned on demand. All contents herein are confidential and must not be copied or submitted to outside parties for examination without the express written consent of Urban Accessories, Inc.

If you received these documents in mistake please contact
sales@urbanaccessories.com.

Project Name	XX
Specified By	XX
Sales Contact	XX
Project Location	XX
Page #	1 of 1

additional notes

SAN JOSE BOLLARD

Cast In

STANDARD SPECIFICATIONS

- Casting material will be high quality cast aluminum, ASTM B26 (unless specified otherwise; see below).
- Finish will be natural patina of raw material (unless specified otherwise; see below).
- Frame is load rated for pedestrian traffic only (unless specified otherwise; see below).
- Dimensions are nominal.

OPTIONS

Materials:

- ☐ Gray Iron, ASTM A48
- ☐ Ductile iron, (All load ratings higher than pedestrian) ASTM A536 class 65-45-12
- ☐ Aluminium, ASTM B26
- ☐ Nickel Bronze, ASTM B584
- ☐ Bronze, ASTM B584

Finishes:

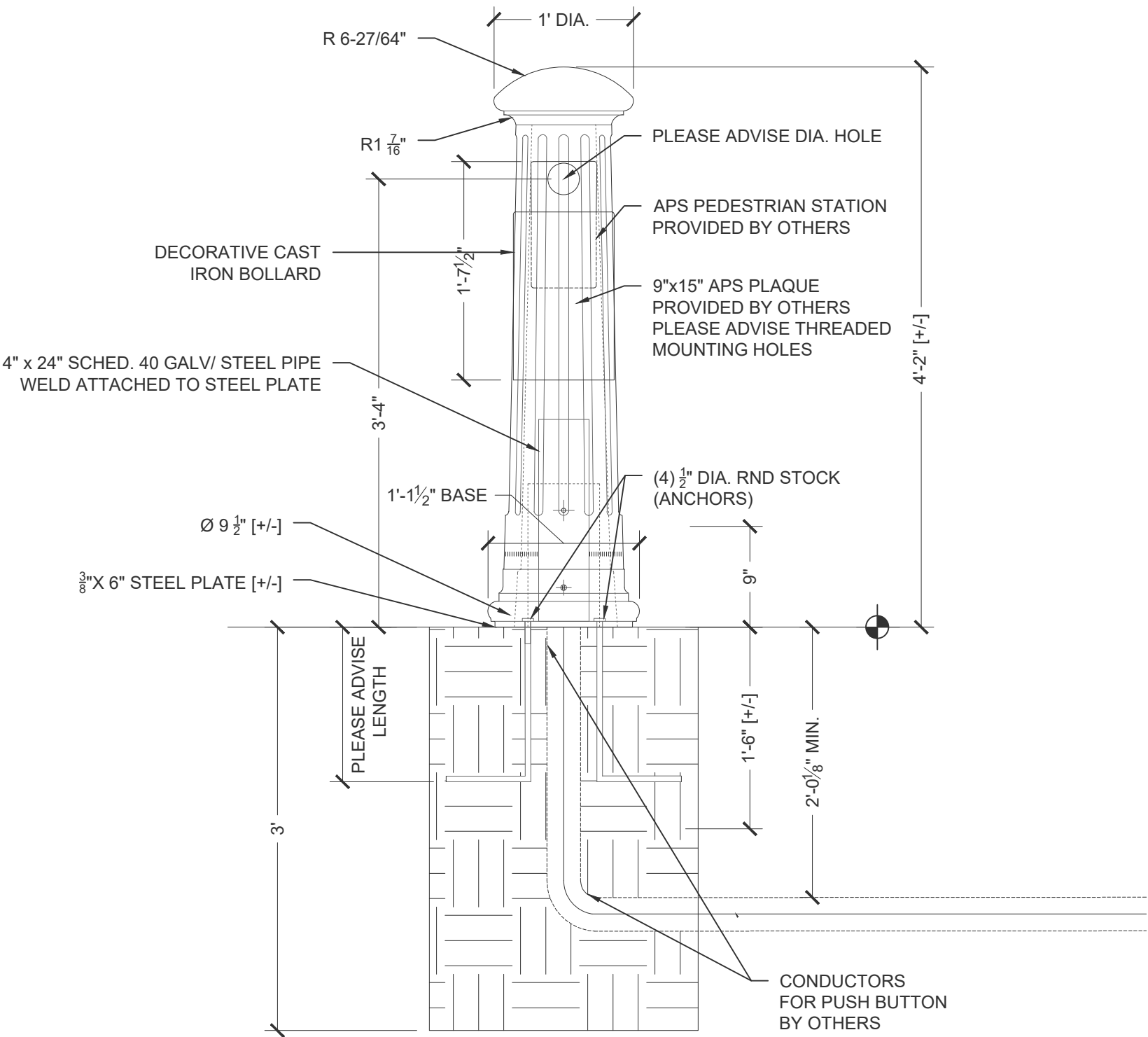
- ☐ Raw (standard)
- ☐ Rust Conditioner
- ☐ Polyester powdercoat (Specify color)
- ☐ Liquid coat (Specify color)
- ☐ Brush
- ☐ Polish
- ☐ Galvanized
- ☐ Other: _____ (With approval from UA)

ADDITIONAL NOTES

- Cast in two pieces.
- Grate is 1 1/2" thick at edge.
- Center opening expansions at 1'-8" square.
- No openings greater than 1/4", in conformance with ADA Accessibility Guidelines.

DRAWING INFO

Drawn By	RI
Date Drawn	11.13.2020



Front View
Scale: 1" = 1' 0"