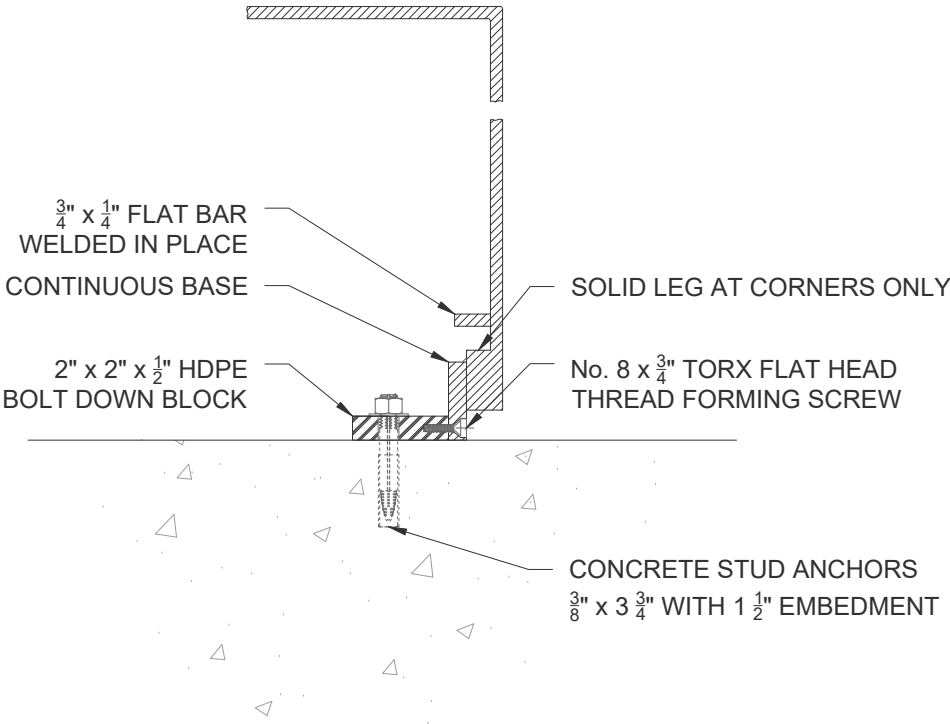
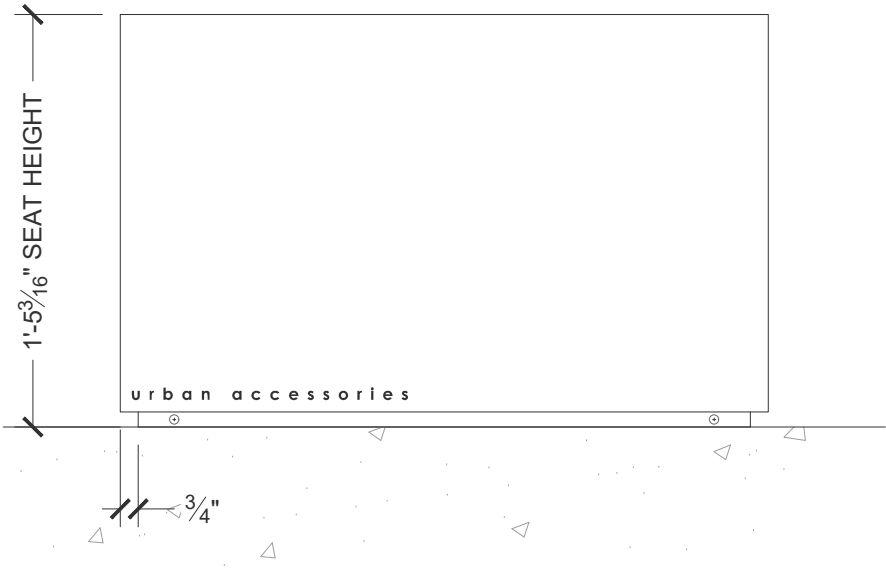


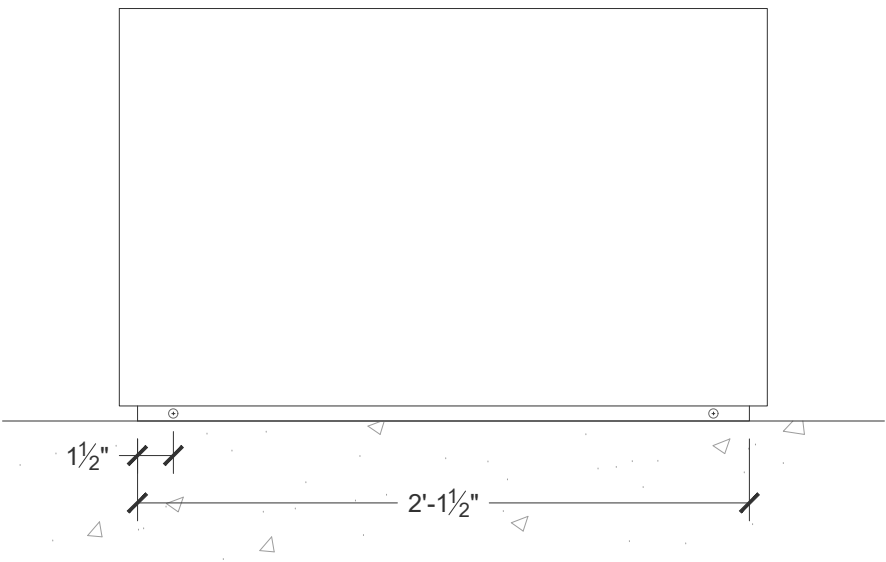
Plan  
Scale: 1 1/2" = 1' 0"



Typical Section  
Scale: 3" = 1' 0"



Front  
Scale: 1 1/2" = 1' 0"



Side  
Scale: 1 1/2" = 1' 0"

## URBAN ACCESSORIES



465 E 15th Street, Tacoma, WA 98421  
1.877.487.0488 | 1.253.572.1112

This print is the property of Urban Accessories, Inc. and is loaned to the recipient subject to be returned on demand. All contents herein are confidential and must not be copied or submitted to outside parties for examination without the express written consent of Urban Accessories, Inc.

If you received these documents in mistake please contact  
sales@urbanaccessories.com.

Project Name	Blank
Specified By	Blank
Sales Contact	sales@urbanaccessories.com
Project Location	Tacoma, WA
Page #	1 of 1

Additional Notes

### HOVER BENCH

Surface Mount - 2.25ft

### STANDARD SPECIFICATIONS

- Fabricated material will be structural aluminum, 6061 T6 (unless specified otherwise; see below).
- Finish will be powder coat (unless specified otherwise; see below).
- All visible welds to be ground smooth on outside edges.
- Fabrication will be true and square, or diameter, and sized within  $\frac{1}{8}$ ".
- For cases of "or equal" consideration, our finished, full size product should be compared to the alternative product for general quality, surface finish, precise pattern or fabrication work, metal characteristics, and overall design aesthetics.
- Dimensions are nominal.

### OPTIONS

- Materials (Frame):**
- ☐ Structural Aluminum, 6061 T6
  - ☐ Stainless Steel, 304
  - ☐ Stainless Steel (Bronze Joints) 304
  - ☐ Other: \_\_\_\_\_
- Finishes:**
- ☐ Polyester Powder Coat (standard)
  - ☐ Raw
  - ☐ Liquid coat (Specify color)
  - ☐ Galvanized

### ADDITIONAL NOTES

©.2019.Urban Accessories. All Rights Reserved

### DRAWING INFO

Drawn By	NR
Date Drawn	3.19.2020