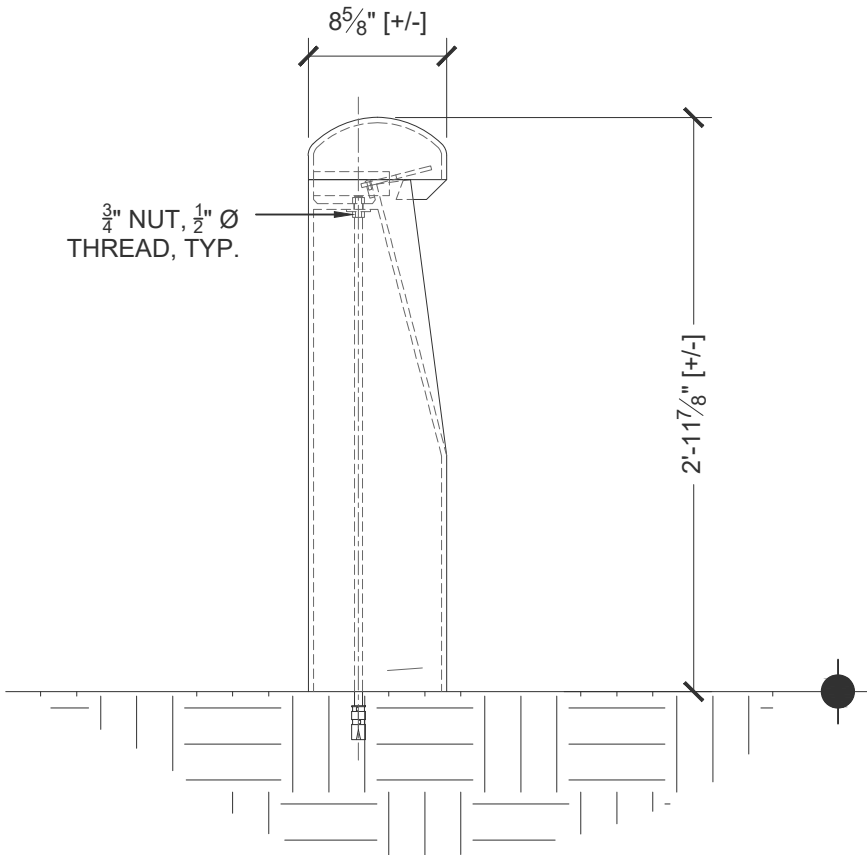

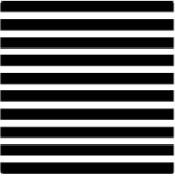




Front View
Scale: 1" = 1' 0"



Side View
Scale: 1" = 1' 0"

URBAN ACCESSORIES



465 E 15th Street, Tacoma, WA 98421
1.877.487.0488 | 1.253.572.1112

This print is the property of Urban Accessories, Inc. and is loaned to the recipient subject to be returned on demand. All contents herein are confidential and must not be copied or submitted to outside parties for examination without the express written consent of Urban Accessories, Inc.

If you received these documents in mistake please contact
sales@urbanaccessories.com.

Project Name	Blank
Specified By	Blank
Sales Contact	sales@urbanaccessories.com
Project Location	Tacoma, WA
Page #	1 of 1

Additional Notes

DG-2 BOLLARD

Surface Mount

STANDARD SPECIFICATIONS

- Fabricated material will be high quality mild carbon steel, ASTM A36 (unless specified otherwise; see below).

- Finish will be natural patina of raw material (unless specified otherwise; see below).

- Frame is load rated for pedestrian traffic only (unless specified otherwise; see below).

- Dimensions are nominal.

OPTIONS

Materials:

☐ Steel

☐ Other: _____ (With approval from UA)

Finishes:

☐ Polyester powdercoat (Specify color)

☐ Other: _____ (With approval from UA)

ADDITIONAL NOTES

- All Hardware will be Stainless Steel

DRAWING INFO

Drawn By	RI
Date Drawn	3.19.2020